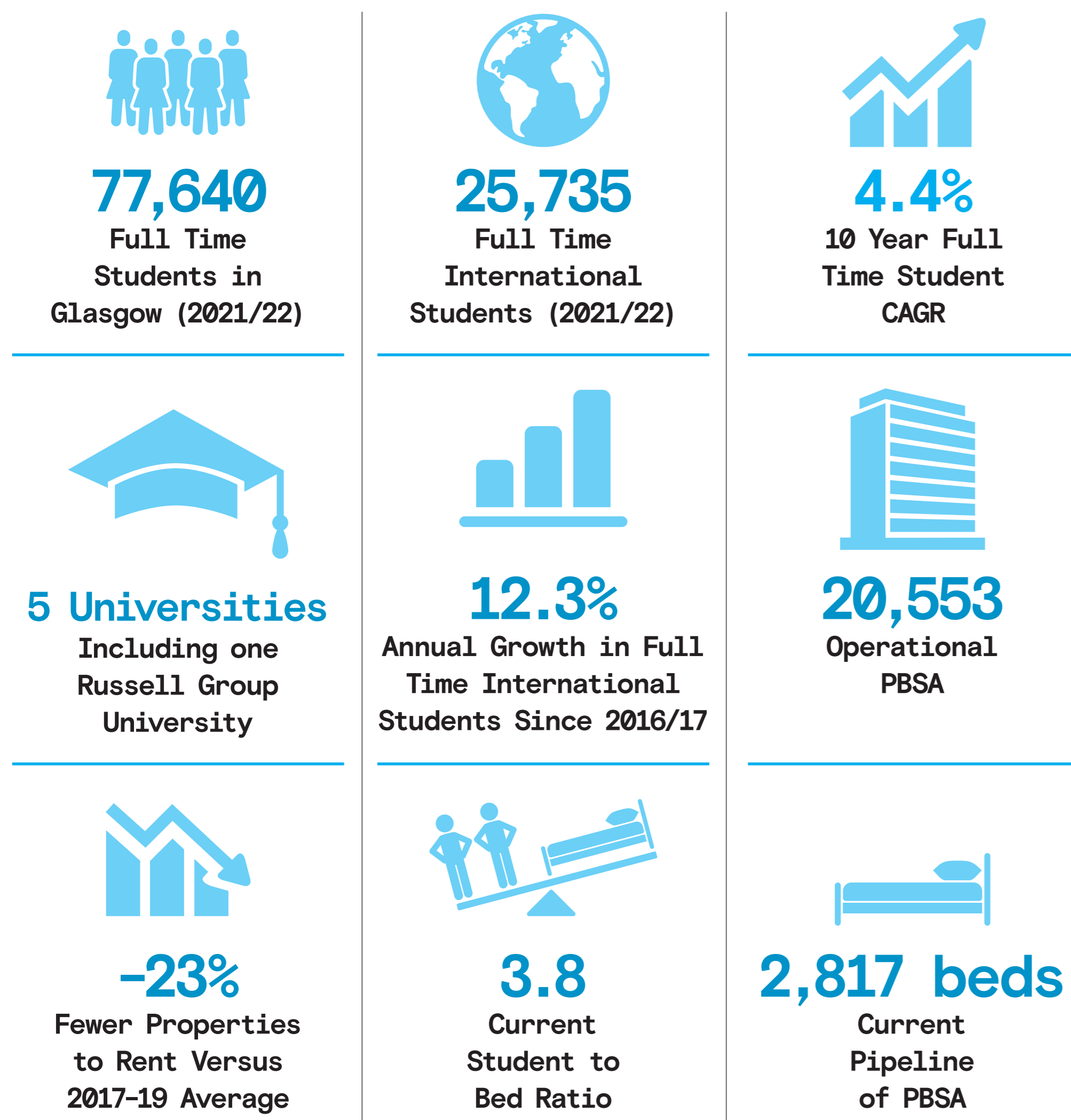


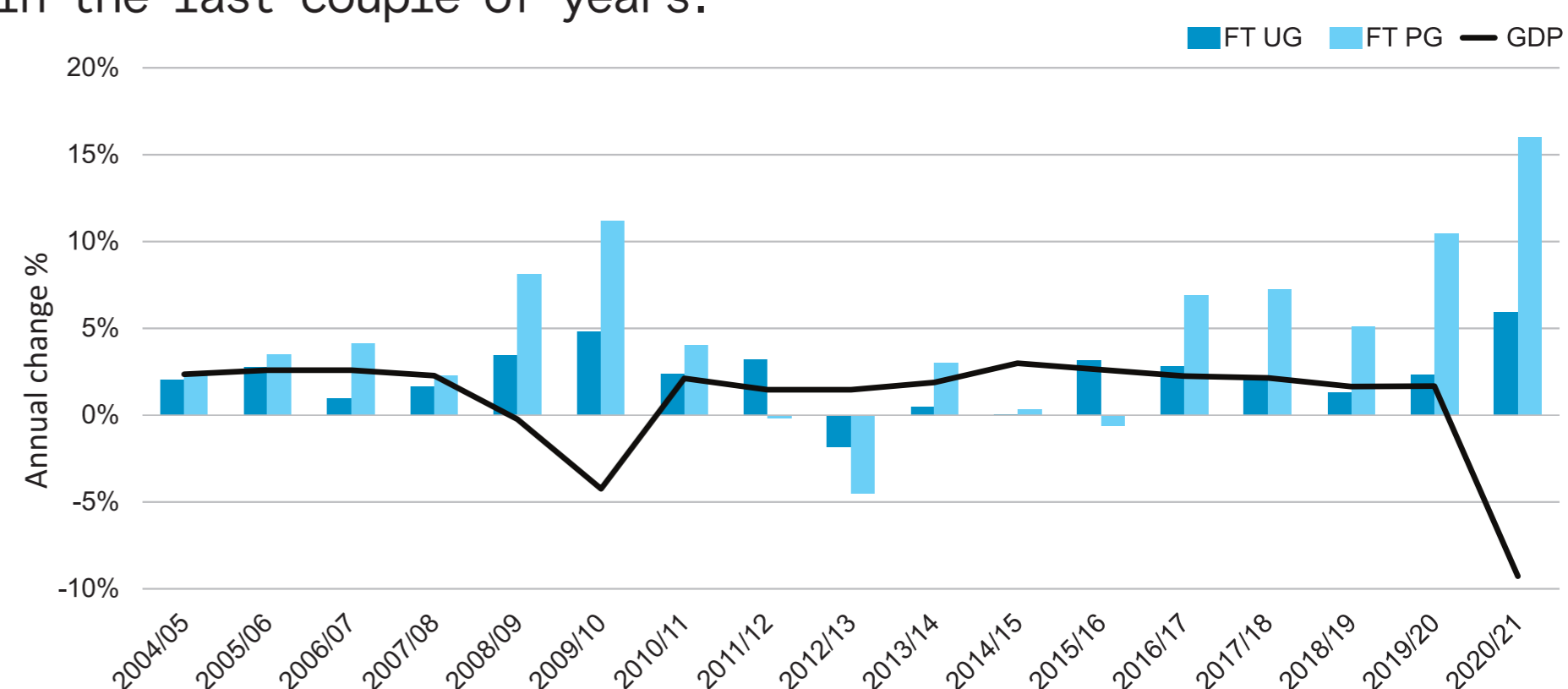
PBSA Market (Purpose Built Student Accommodation)

Glasgow in Numbers



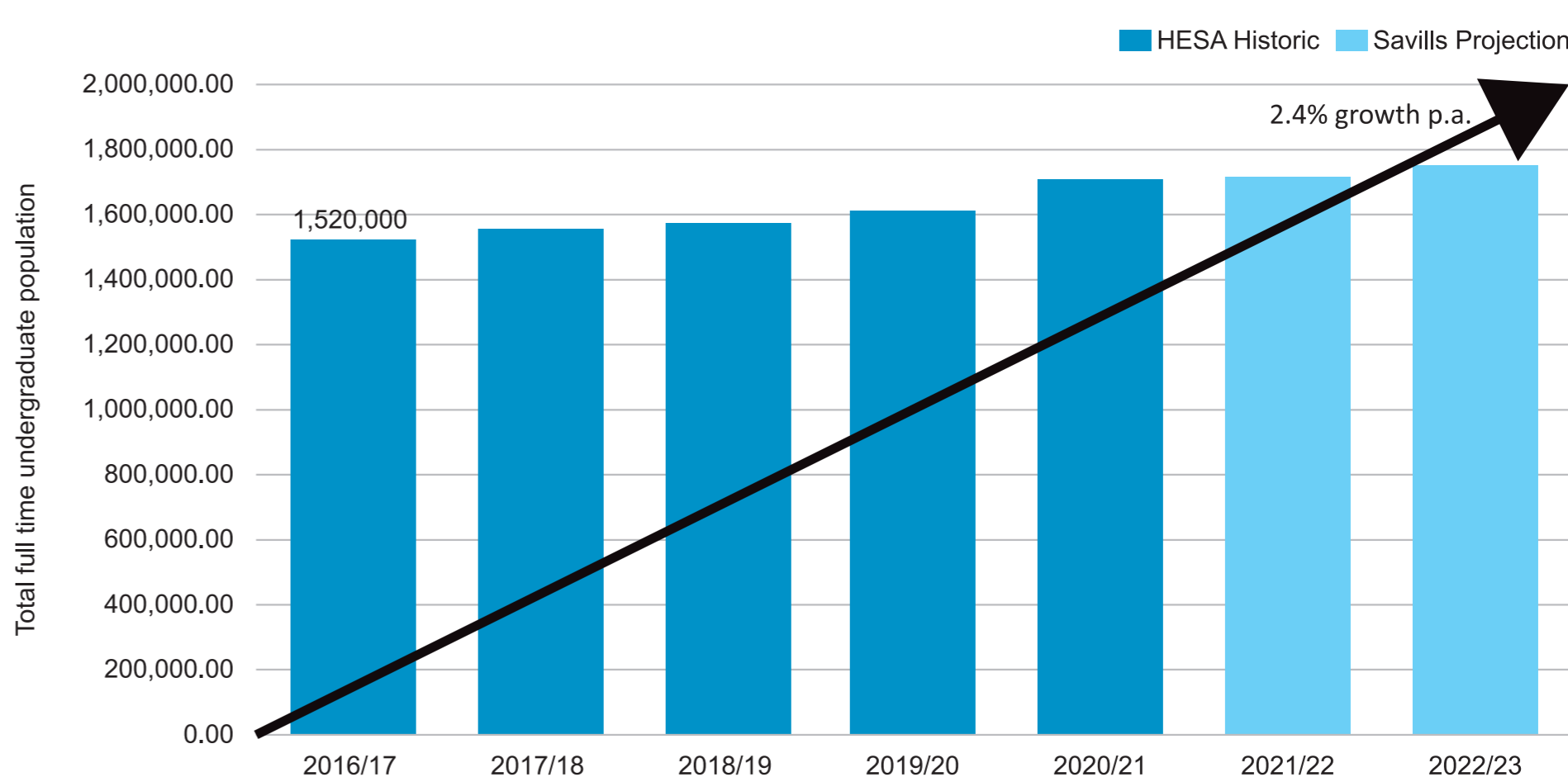
Economic uncertainty

Economic uncertainty increases the demand for higher education which has created strong growth in student numbers in the last couple of years.



Undergraduate growth projection

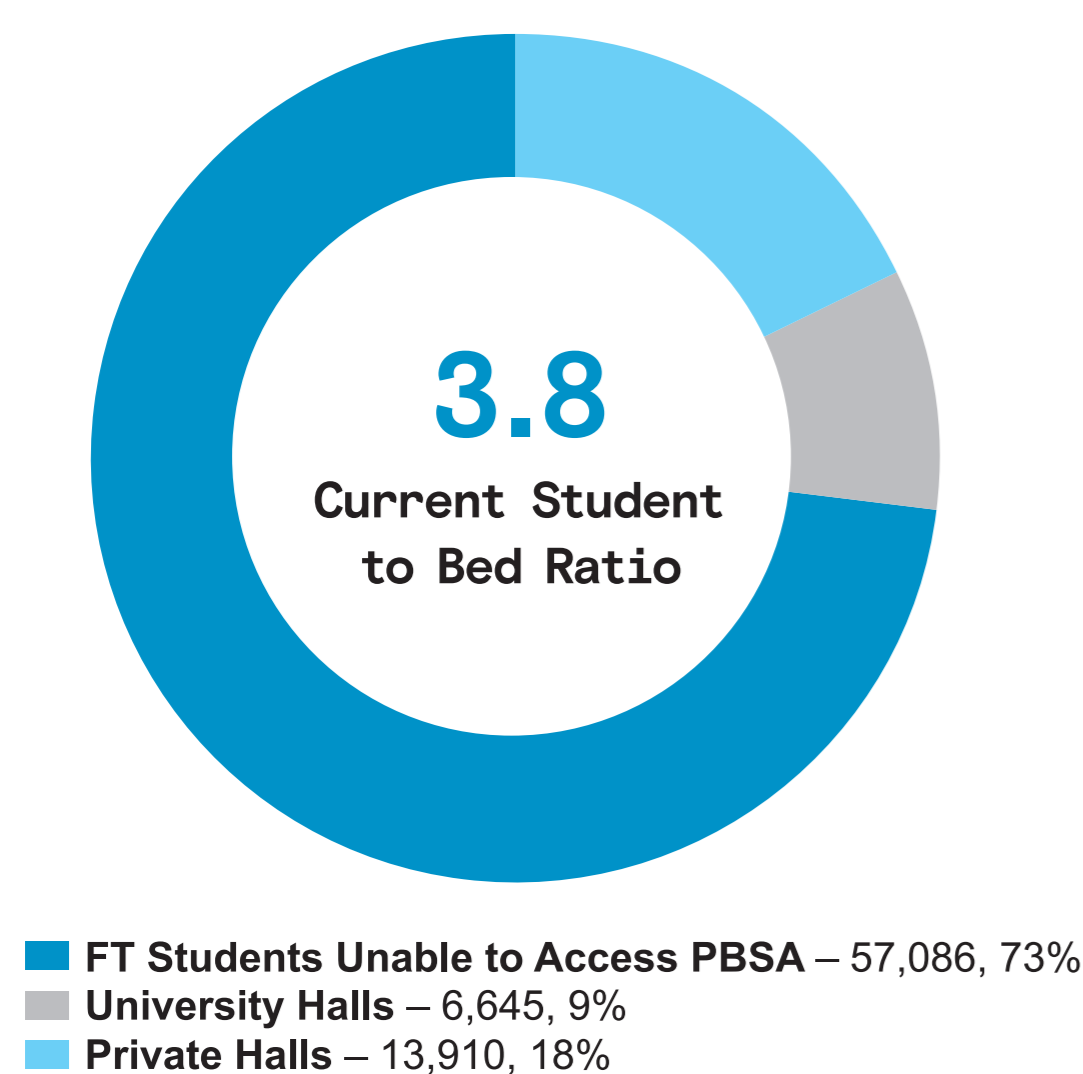
Undergraduate students are projected to continue to grow to 1.75m. Glasgow is unable to accommodate its current student population. The city will be under greater pressure if student numbers continue to grow.



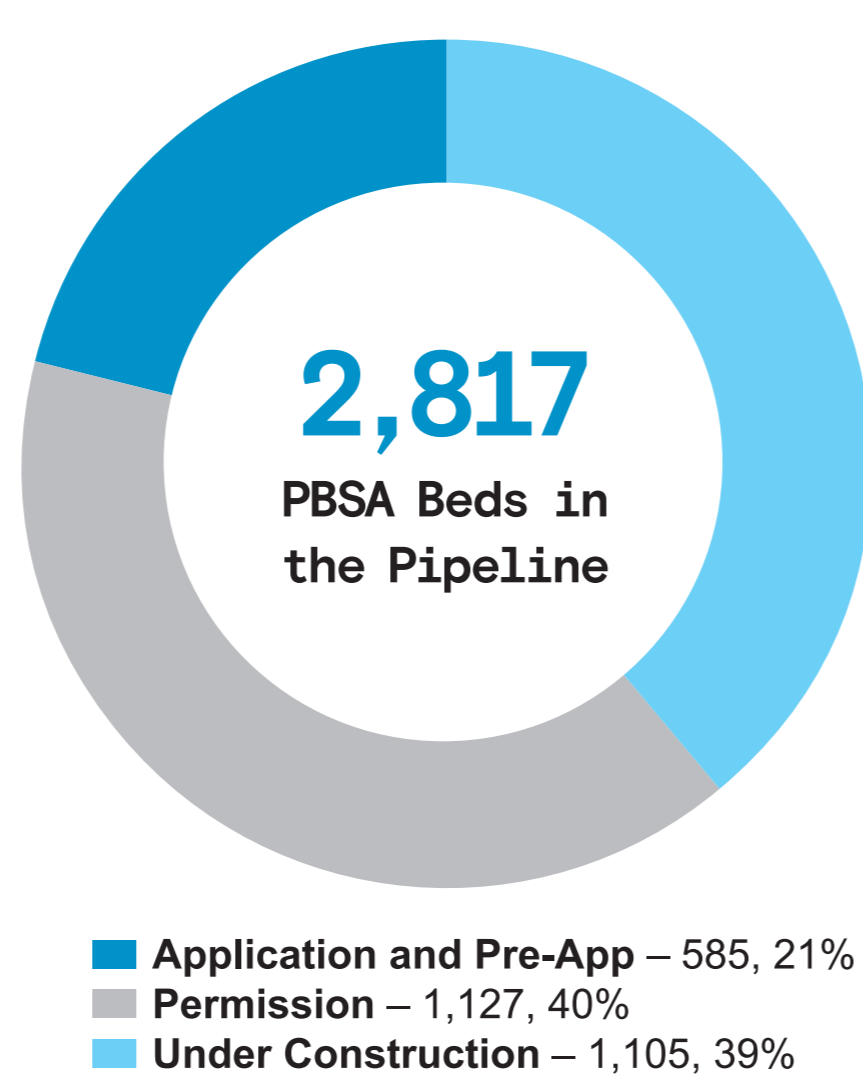
Undersupply of PBSA in Glasgow

There is a significant undersupply of PBSA in Glasgow as publicised in national press and local Universities. 74% of full-time students are unable to access PBSA at current supply levels, with the current pipeline representing 14% of existing stock.

Current Supply and Demand Dynamics

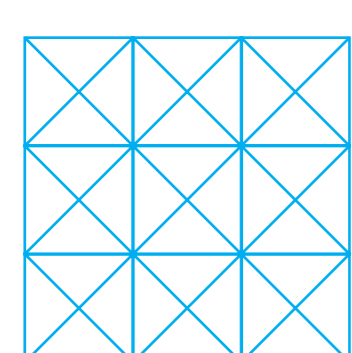
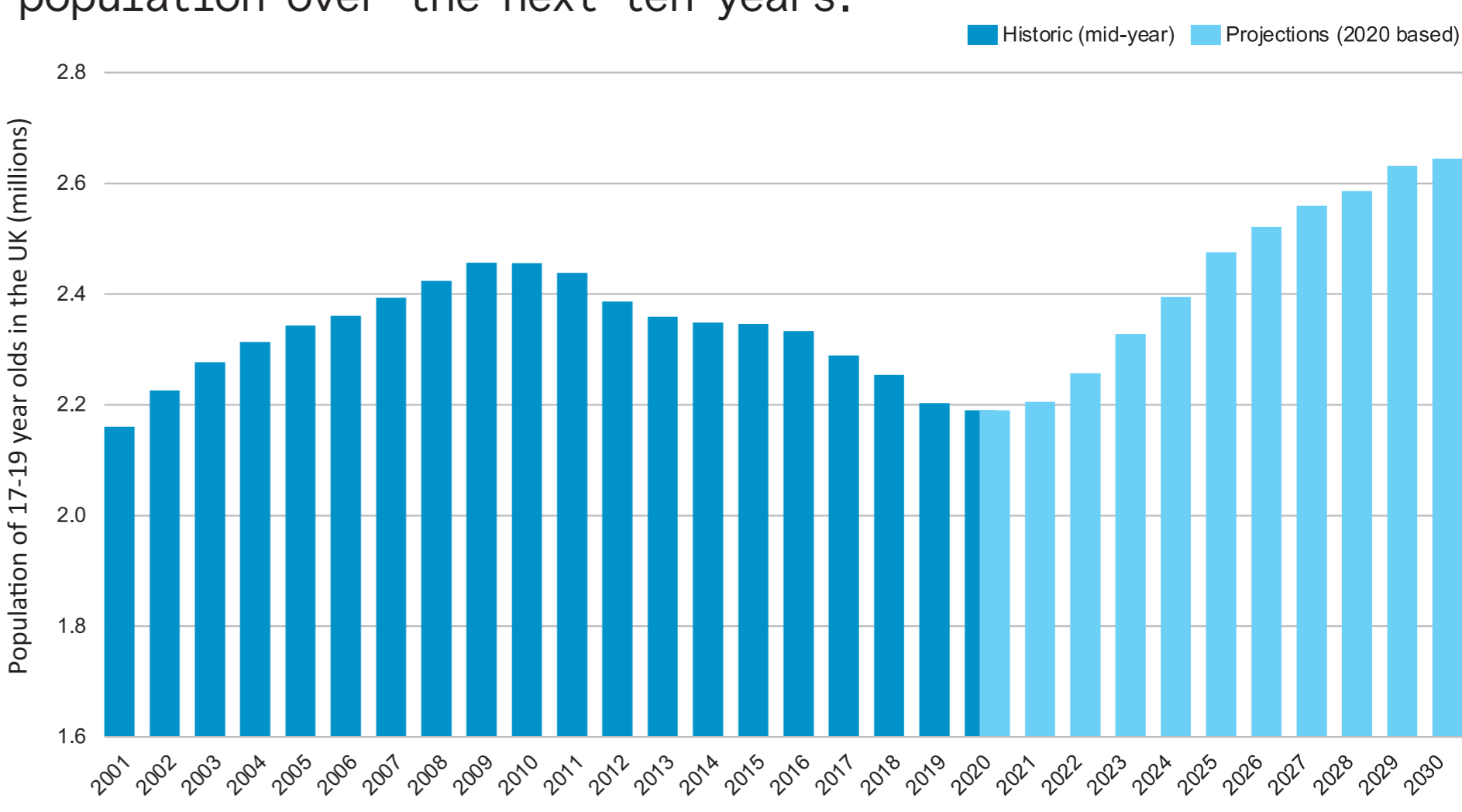


Planning Pipeline



Population of 17-19 year olds over next 10 years

The population of 17-19 year olds will grow over the next 10 years, meaning there will be more university-age people. This will lead to a more rapid increase in the student population over the next ten years.



COOPER CROMAR

- Email us at: hydeparkstreet@iceniprojects.com
- Visit our website: www.graham.co.uk/hydeparkstreet
- Phone us by calling 0141 473 7338
- Write to us at: Iceni Projects Ltd, 201 West George Street, Glasgow, G2 2LW